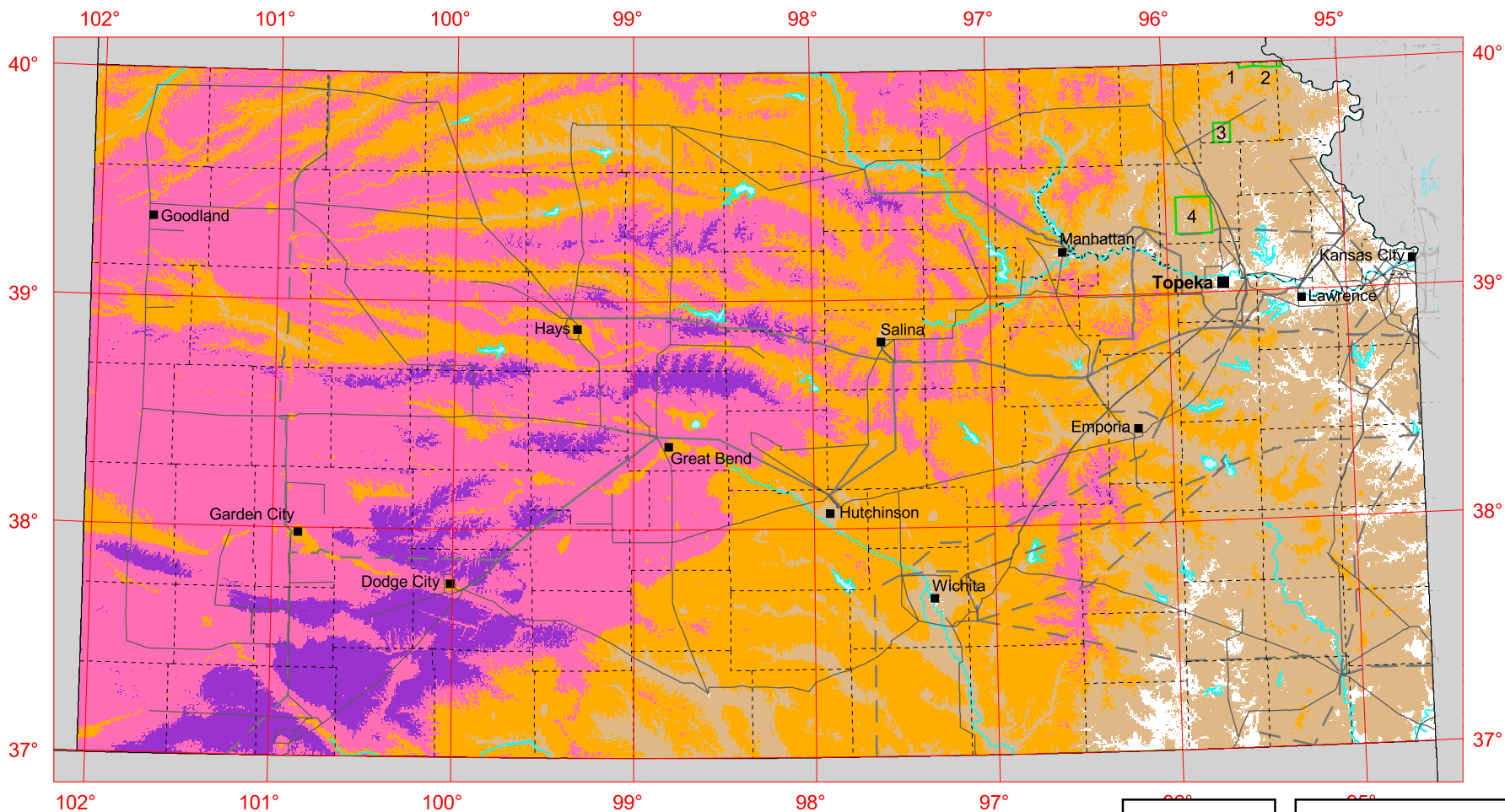


Kansas - Annual Wind Power at 50-m Height



Wind Power Classification				
Wind Power Class	Resource Potential	Wind Power Density at 50 m W/m ²	Wind Speed ^a at 50 m m/s	Wind Speed ^a at 50 m mph
1	Poor	0 - 200	0.0 - 6.0	0.0 - 13.4
2	Marginal	200 - 300	6.0 - 6.8	13.4 - 15.2
3	Fair	300 - 400	6.8 - 7.5	15.2 - 16.8
4	Good	400 - 500	7.5 - 8.1	16.8 - 18.1
5	Excellent	500 - 600	8.1 - 8.6	18.1 - 19.3
6	Outstanding	600 - 800	8.6 - 9.5	19.3 - 21.3

^a Wind speeds are based on a Weibull k of 2.4 at 500 m elevation.

The annual wind power estimates for this map were produced by AWS Truewind using their Mesomap system and historical weather data. It has been validated with available surface data by NREL and wind energy meteorological consultants.

Indian Reservation	
1	Sac and Fox
2	Iowa
3	Kickapoo
4	Potawatomi

Transmission Line* Voltage (kV)	
	115 - 161
	230
	345

* Source: POWERmap, ©2005 Platts, a Division of the McGraw-Hill Companies

